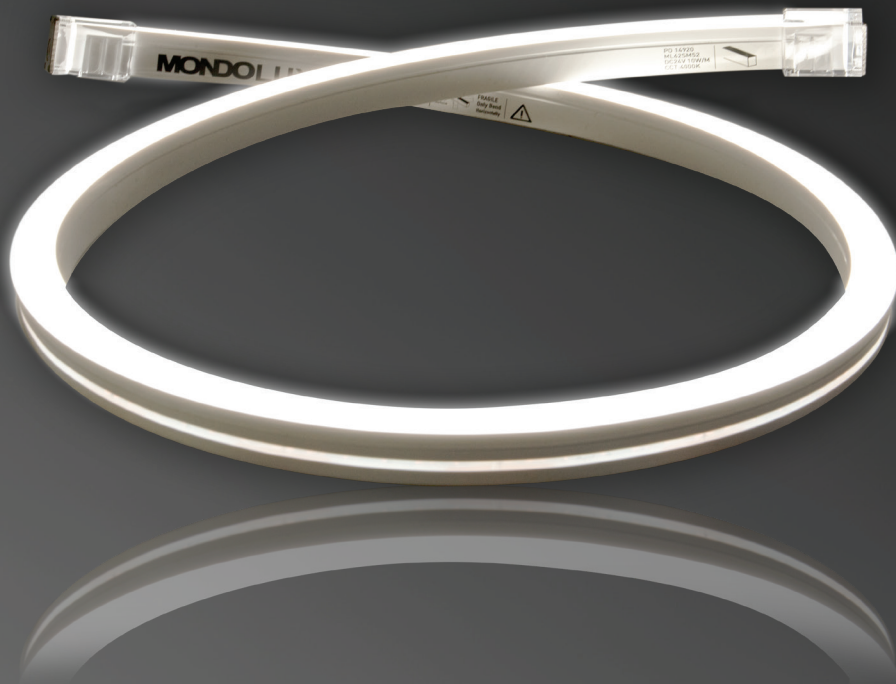


# Neonflex Linea Side Bendable

Built to maintain light uniformity



**NEW**

- High performance, built to maintain consistent illumination
- Fully encapsulated providing IP67 protection
- Variety of Installation accessories
- Customised lengths available in multiples of 50mm
- CCT range: 2700K-6500K, RGBW
- 24V DC Extra Low Voltage

**ENQUIRE NOW**

# Neonflex Linea Side Bendable

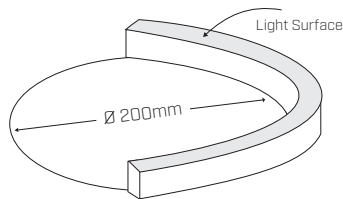
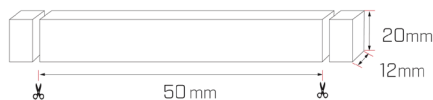


mondolux.com.au

Introducing Neonflex Linea Side Bendable, offering seamless illumination. Features include enhanced durability and weather resistance with a fully encapsulated housing reaching an IP67 rating, making it suitable for extreme weather conditions. With a wide range of accessories including stainless steel end caps, live ends and mounting clips, Neonflex Linea Side Bendable is perfect for interior or exterior architectural illumination and ideal for highlighting wall and ceiling features.

### Available Options:

- Lumen Output: 320lm/m
- System Power: 10W/m
- Beam Angle: 120°
- IP67 Rated
- Dimming Options: 0-10V, Phase cut, DALI, Casambi Wireless
- Finish: White
- Colour Temperature (CCT): 2700K-6500K, RGBW
- Colour Rendering Index (CRI): CRI90
- Multiple Accessories: SS End Cap, Different Live End Options: Front, Left, Right, and Bottom Live End with Side Cable, Mounting Clips: Standard Clip, Aluminium profile, Curve SS profile



### Code Information

Family Code +	Product +	Installation Type +	PCB Width +	Chip Model +	CRI +	CCT +	LEDs/m +	Voltage +	IP +
ML = Mondolux Linear	62 = Neonflex Linea Side	SM = Surface Mounted	5 = 12mm	2 = SMD2835	9 = CRI90	27 = 2700K	120 = 120	24V = 24V	IP67 = IP67
						30 = 3000K			
						40 = 4000K			
						65 = 6500K			
						RGBW = RGBW			

#### Example: ML62SM52-930-120-24V-IP67

Mondolux Neonflex Linea Side Bendable Surface Mounted 10W 24V DC SMD2835 120° CRI90 3000K 320lm 120LEDs IP67 1000mmx12mmx20mm 50mm Cuttable Length

#### Example: ML62SM52-940-120-24V-IP67

Mondolux Neonflex Linea Side Bendable Surface Mounted 10W 24V DC SMD2835 120° CRI90 4000K 320lm 120LEDs IP67 1000mmx12mmx20mm 50mm Cuttable Length